



Selecting your cylinder size

make sure you get the right cylinder

The Yale cylinder is measured from the edge of the cylinder to the centre of the cam and has a specific external and internal side.

- Step 1:** Remove your cylinder from the door by un-screwing the fixing screw.
- Step 2:** Measure each side of the cylinder to the centre of the cam making sure you indicate which is the external side and internal side.
- Step 3:** Purchase your new Yale cylinder.
- Step 4:** Secure the cylinder in position with the fixing screw provided.

Meeting the latest Standards

gives peace of mind your home is secure

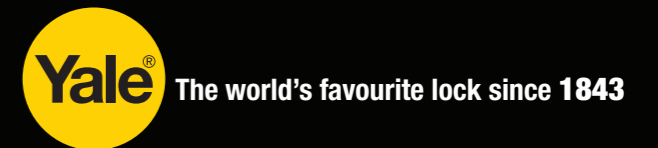
The Yale cylinder has been independently tested to ensure that it meets the latest euro profile cylinder Standards.

Yale history

Yale is one of the oldest international brands in the world and one of the best-known names in the locking industry.

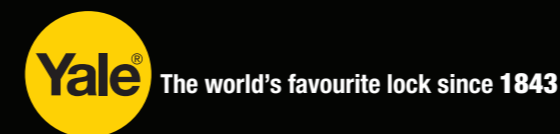
The Yale history captures major innovations that have marked the evolution not just of Yale, but of the entire locking industry.

At Yale we've been looking after people's homes and their favourite things for over two hundred years. Yale has an international heritage with an unparalleled global reach and satisfied consumers in over 125 countries. Today, Yale is part of the ASSA ABLOY group.



Cylinder series

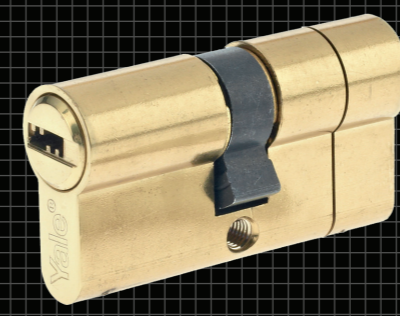
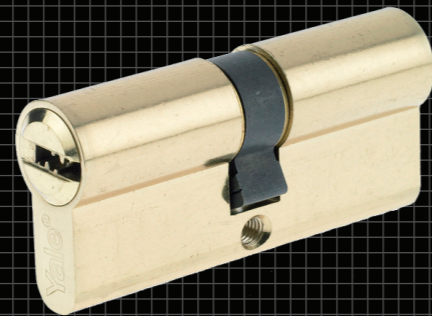
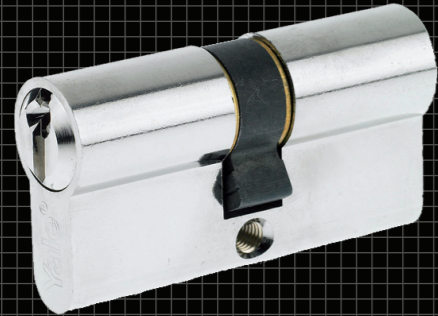
Introducing our cylinder range
500, 1000, 1500 & 2000
series



www.yalelock.com

August 2012. Reorder code: YA

Introducing our cylinder range



500 Series – Euro Profile Cylinder and Turn

Standard Euro Profile Cylinder - 5 pins

- Available as single, double and turn Euro profile cylinder
- Available in polished brass and satin nickel
- Including 3 keys

• Tested to **EN1303:2005**

1	2	3	4	5	6	7	8
1	6	0	0	0	c	3	0



EN1303:2005

1000 Series – Euro Profile Cylinder and Turn

Standard Security Euro Profile Cylinder with Dimple keys - 6 pins

- Available as single, double and turn Euro profile cylinder
- Available in polished brass and satin nickel
- Including 5 keys
- Key card to have extra keys
- Drill protection
- Reversible dimple key

• Tested to **EN1303:2005**

1	2	3	4	5	6	7	8
1	6	0	0	0	c	3	0



EN1303:2005

1500 Series – Break Secure Euro Profile Cylinder and Turn

Standard Security Break Secure Euro Profile Cylinder with Dimple keys - 6 pins

- Available in double and turn Euro profile cylinder
- Available as double Euro profile cylinder
- Including 5 keys
- Key card to have extra keys
- Drill protection
- Reversible dimple key

• Tested to **EN1303:2005**

1	2	3	4	5	6	7	8
1	6	0	0	0	c	3	0



EN1303:2005

2000 Series – Euro Profile Cylinder and Turn

High Security Euro Profile Cylinder with Dimple keys - 10 pins

- Available as single, double and turn Euro profile cylinder
- Available in polished brass and satin nickel
- Including 5 keys
- Key card to have extra keys
- Drill protection
- Anti pick function
- Reversible dimple key

• Tested to **EN1303:2005**

1	2	3	4	5	6	7	8
1	6	0	0	0	c	5	0



EN1303:2005